



OFFICE FOR SUBLEASE

1800 INTERNATIONAL PARK

1800 International Park
Birmingham, Alabama 35243

25,412 RSF AVAILABLE IMMEDIATELY



AVAILABLE AREA	25,412 rsf located on the top floor
ASKING RATE	\$15.00 rsf
TIMING	Immediate
CONDITION	As-Is
TERM	Thru September 30, 2013

BUILDING FEATURES

- Good access to I-459 and I-65; equidistant to U.S. Highway 280 & US Highway 31
- Overlooks Cahaba Lake
- Surface parking (4 spaces per 1,000 rsf)
- Two (2) covered parking spaces available
- Building conference room and fitness center
- Outdoor terrace available to tenants
- One-mile walking trail in the park

FOR MORE INFORMATION, PLEASE CONTACT:

Bill Pradat, SIOR

President
(205) 314-5526
bpradat@egsinc.com

Christy Roddy

Vice President - Office
(205) 314-5512
croddy@egsinc.com

EGS COMMERCIAL REAL ESTATE, INC.

505 20th Street North, Suite 700
Birmingham, AL 35203
(205) 939-4440
www.egsinc.com

The depiction in the included photograph of any person, entity, sign, logo or property, other than EGS Commercial Real Estate, Inc.'s (EGS) client and the property offered by EGS, is incidental only, and is not intended to connote any affiliation, connection, association, sponsorship or approval by or between that which is incidentally depicted and EGS or its client. No warranty or representation, express or implied, is made as to the accuracy of the information contained herein, and same is submitted subject to errors, omissions, change of price, rental or other conditions, withdrawal without notice, and to any specific listing conditions, imposed by our principals.



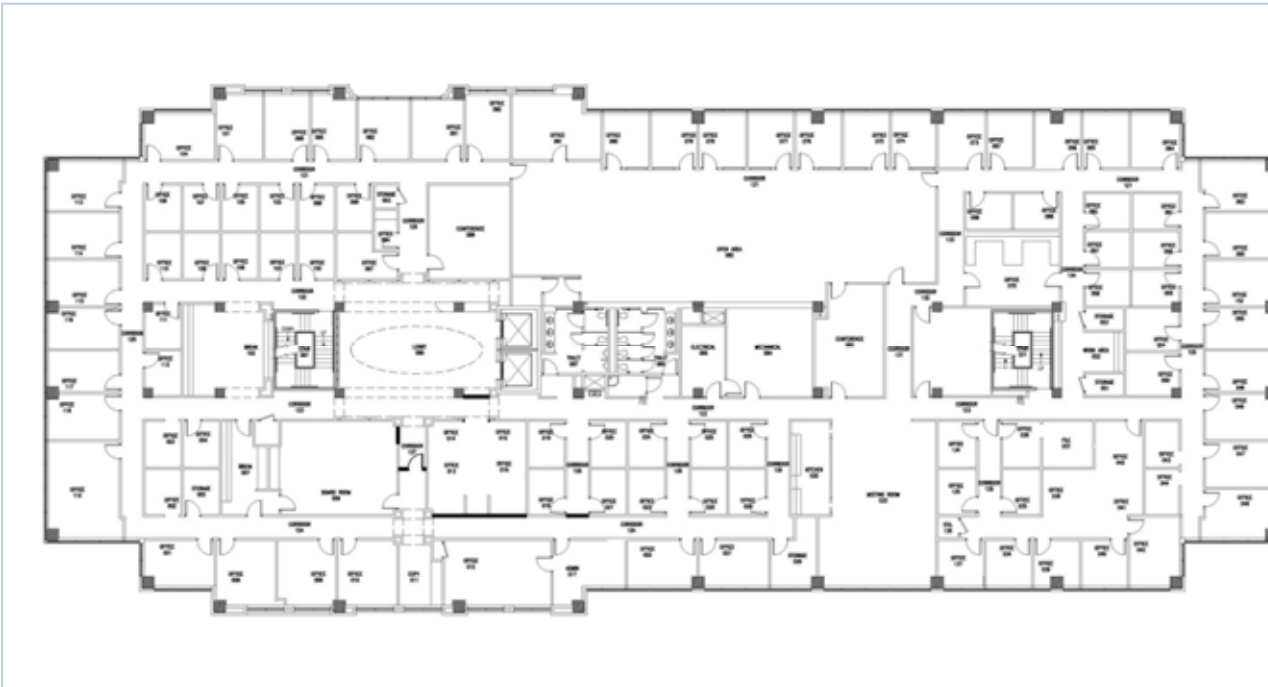


OFFICE FOR SUBLEASE

1800 INTERNATIONAL PARK

1800 International Park
Birmingham, Alabama 35243

25,412 RSF AVAILABLE IMMEDIATELY



FOR MORE INFORMATION, PLEASE CONTACT:

Bill Pradat, SIOR
President
(205) 314-5526
bpradat@egsinc.com

Christy Roddy
Vice President - Office
(205) 314-5512
croddy@egsinc.com

EGS COMMERCIAL REAL ESTATE, INC.
505 20th Street North, Suite 700
Birmingham, AL 35203
(205) 939-4440
www.egsinc.com

The depiction in the included photograph of any person, entity, sign, logo or property, other than EGS Commercial Real Estate, Inc.'s (EGS) client and the property offered by EGS, is incidental only, and is not intended to connote any affiliation, connection, association, sponsorship or approval by or between that which is incidentally depicted and EGS or its client. No warranty or representation, express or implied, is made as to the accuracy of the information contained herein, and same is submitted subject to errors, omissions, change of price, rental or other conditions, withdrawal without notice, and to any specific listing conditions, imposed by our principals.

