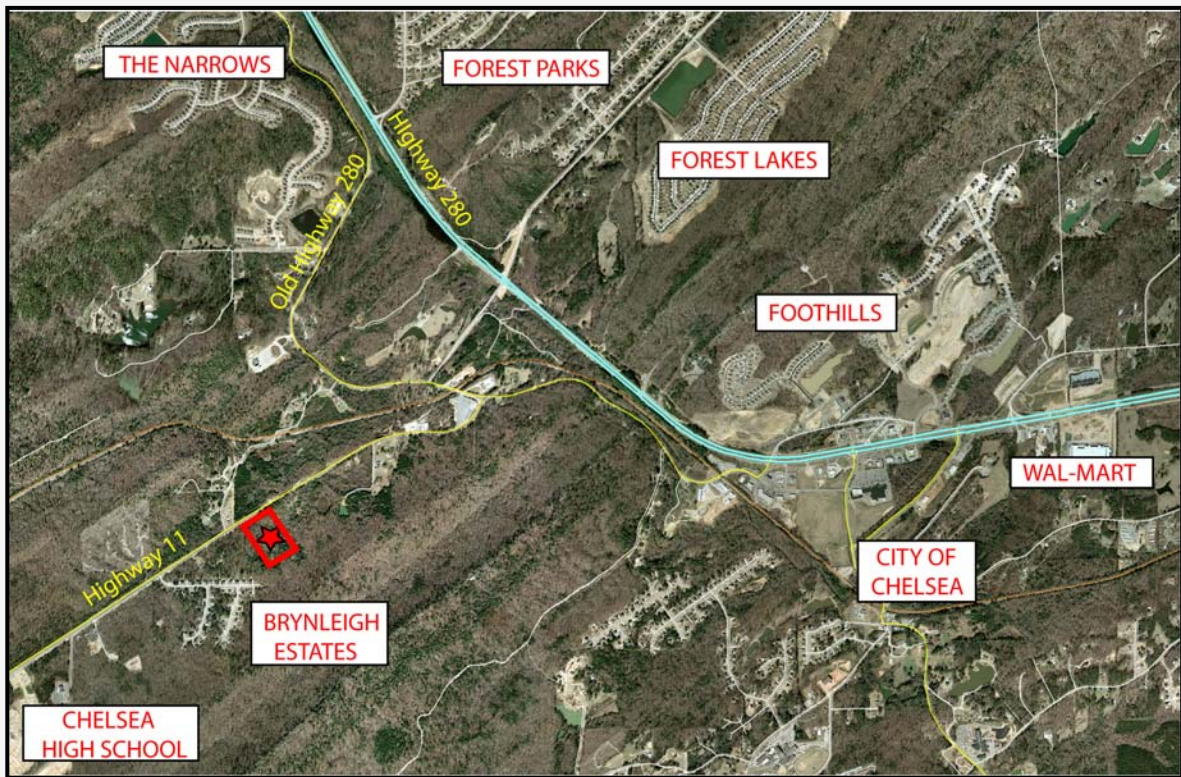


# County Road Highway 11

Chelsea, Alabama 35043

For Sale LAND



- LOCATION:** Highway 11  
Shelby County, AL
- ACREAGE:** Approximately 18 acres
- TOPOGRAPHY:** Rolling
- UTILITIES:** All utilities available including sewer
- MUNICIPALITY:** City of Chelsea
- COMMENTS:**
- Well located property in high growth area
  - Close proximity to Chelsea High School
  - Minutes from Highway 280 corridor

**SALES PRICE: \$630,000**  
**(\$35,000 per acre)**



For more information and inspection please contact:

**MARK D. BYERS, SIOR**  
(205) 939 – 4440 Main  
(205) 314 – 5522 Direct  
mbyers@egsinc.com

No warranty or representation, express or implied, is made as to the accuracy of the information contained herein, and same is submitted subject to errors omissions, change of price, rental or other conditions, withdrawal without notice, and to any specific listing conditions, imposed by our principals.

**EGS**  
Commercial Real Estate

An independently owned and operated member of the  
**CUSHMAN & WAKEFIELD**  
ALLIANCE

505 North 20th Street, Suite 700, Birmingham, AL 35203