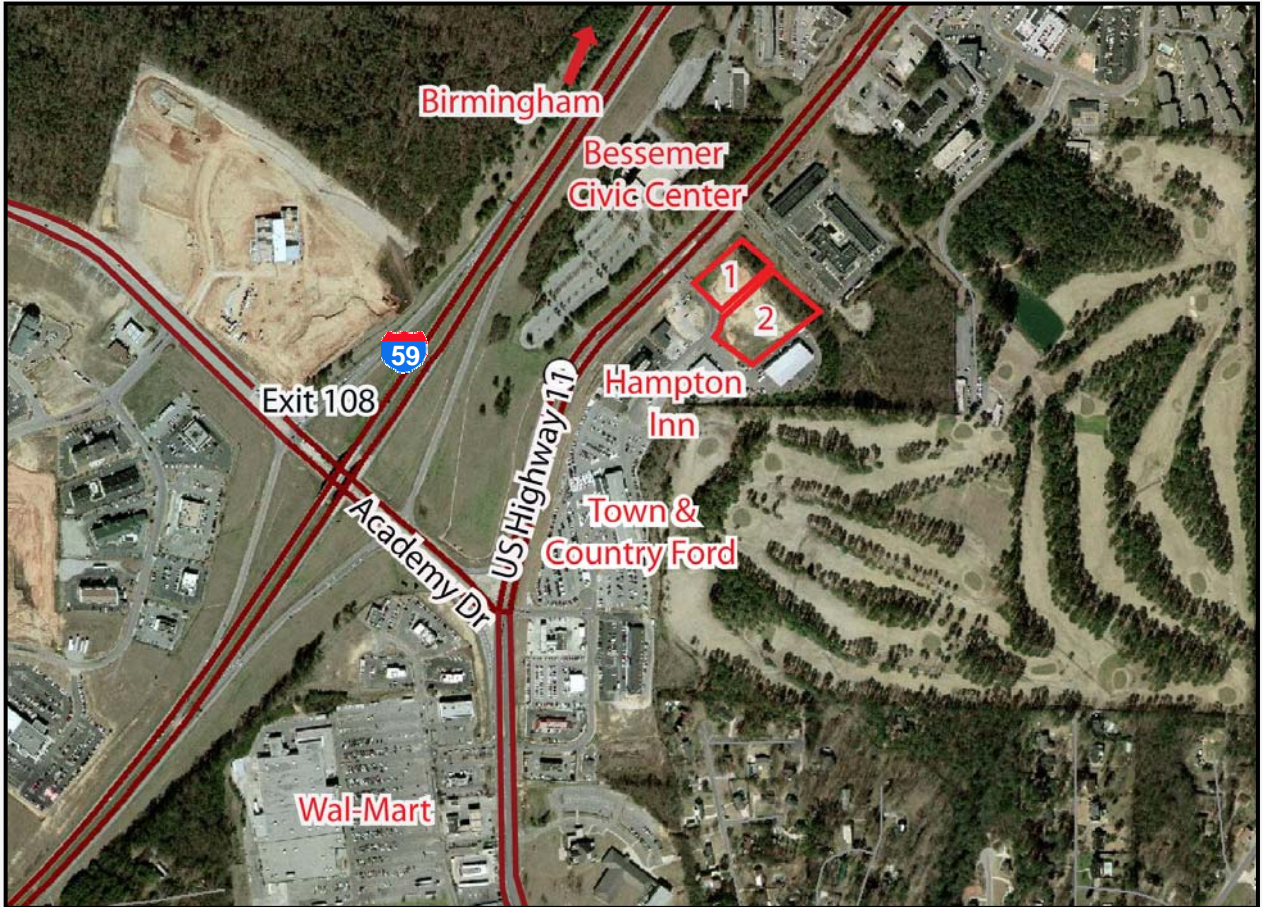


Academy Drive Area

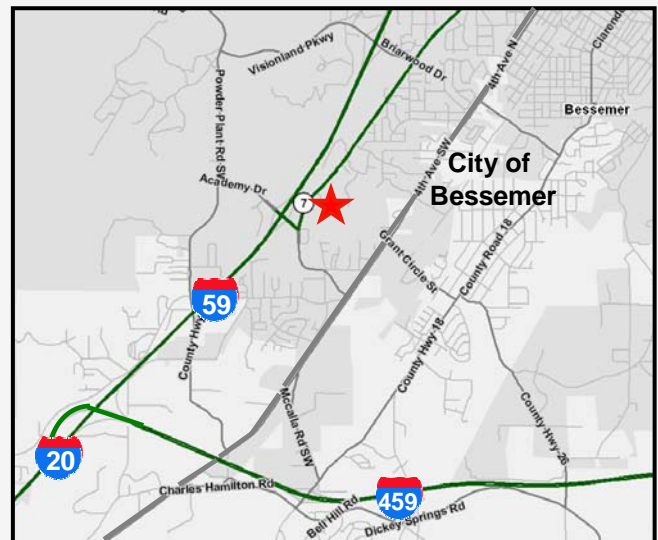
Bessemer, Alabama 35020
Jefferson County

For Sale LAND

Bessemer, AL - Land Parcels



- LOT 1:** 1.52 acres
\$500,000 (\$7.55 / sf)
- LOT 2:** 2.29 acres
\$515,000 (\$5.16 / sf)
- UTILITIES:** All available
- ZONING:** C-3; Commercial District
City of Bessemer



For more information and inspection please contact:

DEBORAH J. MCGILL
(205) 939-4440 Main
(205) 314-5534 Direct
dmcgill@egsinc.com

MARK D. BYERS
(205) 939-4440 Main
(205) 314-5522 Direct
mbyers@egsinc.com

No warranty or representation, express or implied, is made as to the accuracy of the information contained herein, and same is submitted subject to errors omissions, change of price, rental or other conditions, withdrawal without notice, and to any specific listing conditions, imposed by our principals.

EGS
Commercial Real Estate

An independently owned and
operated member of the
**CUSHMAN &
WAKEFIELD**
ALLIANCE

505 North 20th Street, Suite 700, Birmingham, AL 35203