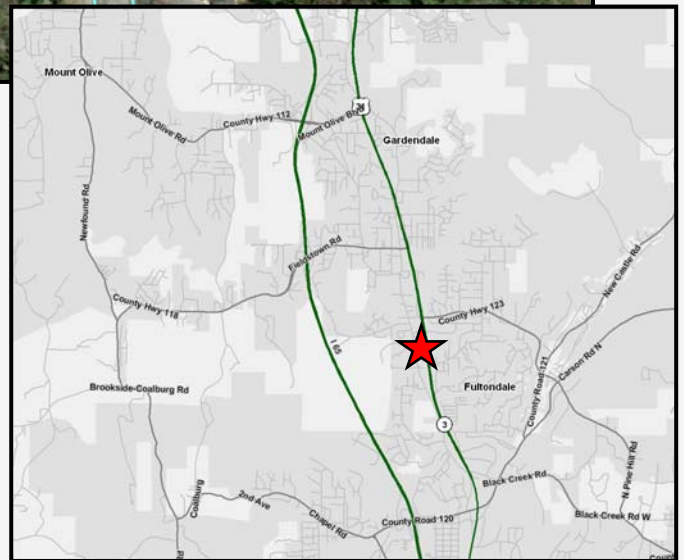
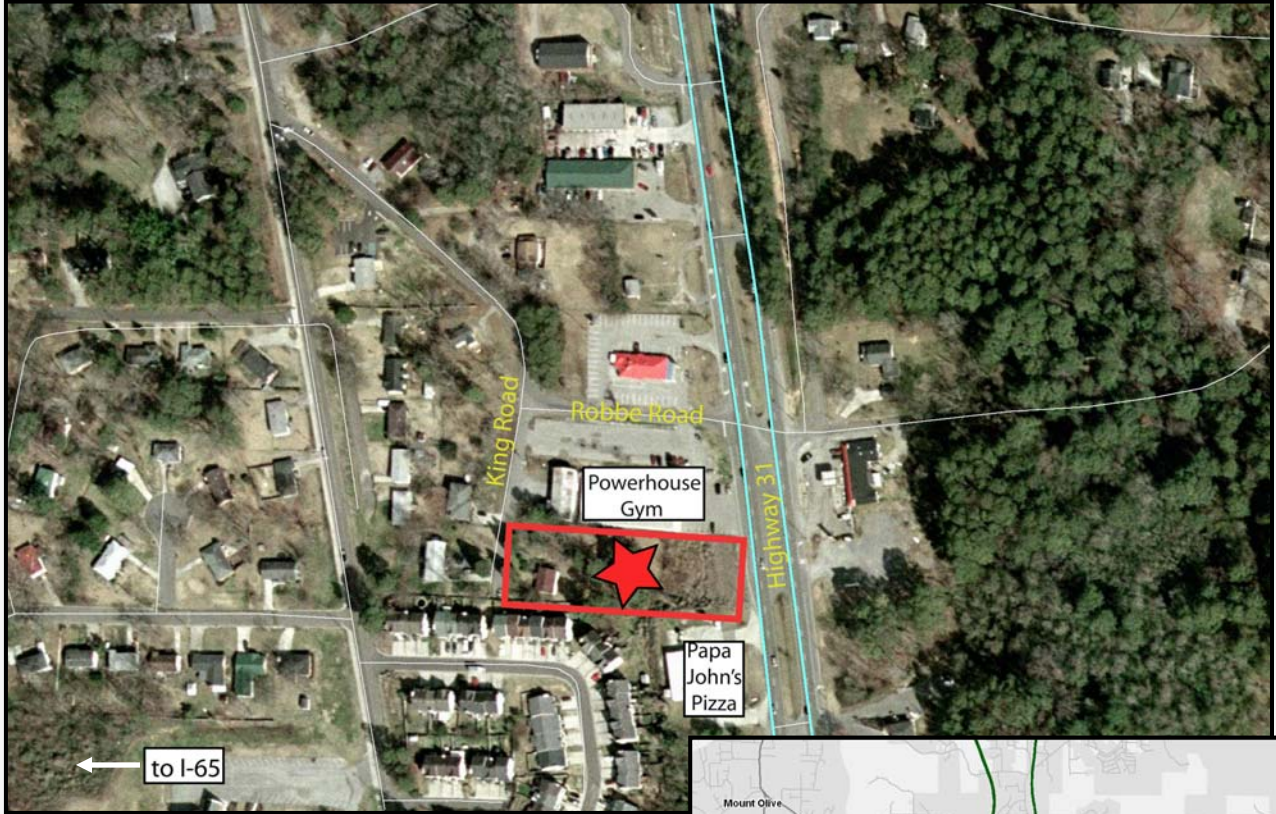


For Sale LAND

501 King Road

Gardendale, Alabama 35071
Jefferson County

Land Site with Great Exposure on Highway 31



ACREAGE: +/- 0.85 acres
TOPOGRAPHY: Slopes back to front
UTILITIES: All available
ZONING: C-2 (Commercial)
City of Gardendale
TRAFFIC COUNT: 13,700

COMMENTS:

- Close proximity to I-65
- Great site for retail, office, etc.
- Frontage on Highway 31

Sales Price: ~~\$79,000~~

REDUCED: \$59,000

For more information and inspection please contact:

ALLEN GARSTECKI, JR.
(205) 939 – 4440 Main
(205) 314 – 5547 Direct
agarstecki@egsinc.com

No warranty or representation, express or implied, is made as to the accuracy of the information contained herein, and same is submitted subject to errors omissions, change of price, rental or other conditions, withdrawal without notice, and to any specific listing conditions, imposed by our principals.

